



Velttra Eletech

Electrical Automation & Solution

Formerly Known as Vinworth Eletech PVT. LTD.







ABOUT US

Veltra Elettech Pvt. Ltd. is a professionally managed organization engaged in the engineering, manufacturing, and distribution of advanced electrical and automation solutions. With a strong focus on quality, reliability, and innovation, we cater to the critical power and control system requirements of diverse industrial sectors.

Our core expertise lies in delivering end-to-end panel solutions and premium electrical components, ensuring seamless integration with existing systems while meeting international quality and safety standards.



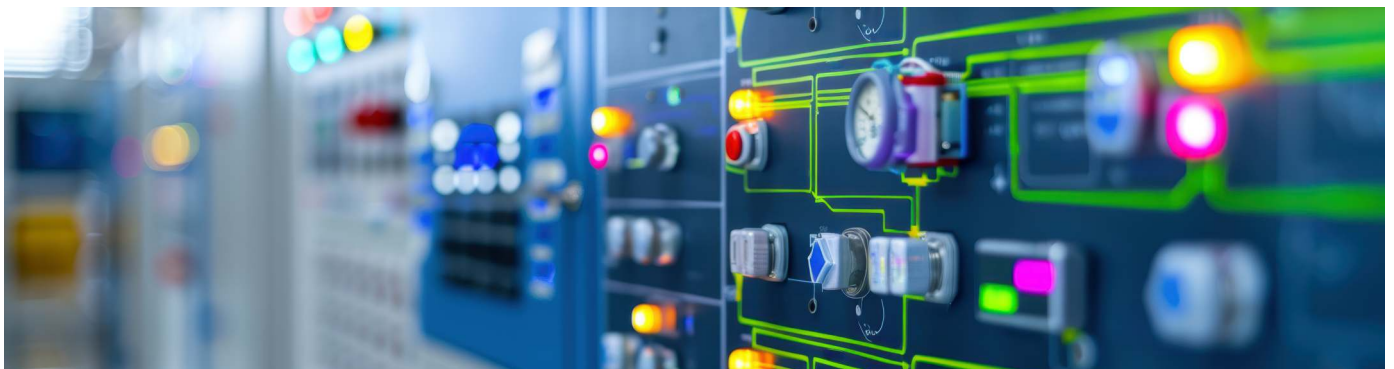
OUR EXPERTISE

We Specialising in Supply, Installation, Testing, and Commissioning (SITC) across industries such as Solar, Pharma, Water, Wastewater, Science City, STP Plants, OIL & GAS, Infra Projects, FMCG, Food & Dairy Plant and Chemical Processing Plants.

Our core strengths include:

- ▶ Supply of Electrical, Automation, and Solar Products
- ▶ Comprehensive Solar Solutions: Design, Supply, Installation, Testing, Commissioning, and Maintenance
- ▶ Turnkey Electrical and Automation Solutions: Design, Engineering, Panel Manufacturing, and On-site Services
- ▶ Expertise in Retrofit Projects: Repair and replacement of old products and panels

We are an approved vendor for Government Departments, supplying products like VFD Controllers, Tube-well Automation Panels, Solar Panels, Solar Pumps, Pressure Transmitters, Flowmeters, Dosing Systems, UPS, Inverters, and Polycab Wires and Cables.



CUSTOM-ENGINEERED ELECTRICAL PANELS

- ▶ **VFD Panels (Solar/Industrial Applications):** Energy-efficient drive solutions tailored for solar pump and process automation.
- ▶ **PLC Panels:** Designed for industrial process automation with modular scalability.
- ▶ **IPCC / PCC Panels:** Centralized power control systems conforming to IEC standards.
- ▶ **IMCC / MCC Panels:** Intelligent motor control with integrated protection, diagnostics, and communication.
- ▶ **APFC Panels:** Automated solutions for reactive power compensation and power factor correction.
- ▶ **AMF Panels:** Automatic power source switching for standby and emergency power systems.
- ▶ **Solar ACDB / DCDB Panels:** Engineered for photovoltaic plant safety and efficiency.
- ▶ **Bus-Duct Systems:** Compact, low-loss power transmission for industrial infrastructure.



SOLAR SOLUTIONS

We specialize in solar supply and services, including:

- ▶ Solar Panels and Modules
- ▶ Solar Inverters and VFDs
- ▶ Solar Pumping Solutions
- ▶ Solar ACDB/DCDB Panels
- ▶ Turnkey Solar Installation and Maintenance Services

Distribution Network & Mission

We have a strong PAN-India distribution network, catering to corporate clients, institutional clients, government bodies, railways, and builders. Our mission is to lead the market with premium-quality electrical & automation products, underpinned by excellence, ethics, and transparency.



INDUSTRIAL AUTOMATION

- ▶ PLCs & HMIs for Process Logic & Visualization
- ▶ Soft Starter
- ▶ VFDs: xD / Fx / Hx / Nx Series
- ▶ Integrated SCADA Solutions
- ▶ Active Harmonic Filters (AHF)



Electrical & Automation

XP SERIES - PLC

- ▶ xP1000: (Compact PLC) – 24V DC, up to 112 I/Os, 2 serial ports, USB
- ▶ xP3000: AC/DC, up to 140 I/Os, relay outputs, 2 high-speed counters (60kHz)
- ▶ xP5000: (Advanced Modular PLC) – AC/DC, up to 196 I/Os, modular I/O

XT SERIES - HMI

- | | |
|---|---|
| <ul style="list-style-type: none"> xT 1000 xTE 3000 xTS 5000 | <ul style="list-style-type: none"> ▶ Display up to 15" ▶ 64KB SRAM, 64MB Flash, SD card support ▶ Ethernet / RS-232C / RS-422/485 ▶ 132KB Logic program area, CE, RoHS ▶ Certified, User-friendly with USB host/device ▶ Ports and multiple screen size |
|---|---|

SOFT STARTER

- ▶ xS1000 / xS2000 - 18-200 AMP internal bypass
- ▶ xS3000 - 24-580 AMP internal bypass
- ▶ xS4000 - 24-2430 AMP internal/external by pass

XD SERIES - VFD

- ▶ xD1000: 0.37-30KW-ND VFD
- ▶ xD2000: 0.37-160KW-ND/HD VFD
- ▶ xD3000: 0.37-15KW-HD VFD
- ▶ xD4000: 0.37-315KW-ND/HD VFD

INTEGRATED SCADA SOLUTIONS

- ▶ SmartComm™ offers a unified dashboard for LK drives, soft-starters, AHFs, and third-party devices.

ACTIVE HARMONIC FILTERS (AHF)

- ▶ Rating: 30–600A (3-Φ 3-W) / up to 300A (3-Φ 4-W)



SWITCHGEAR & PROTECTION DEVICES

- ▶ Air & Moulded Case Circuit Breakers (ACB/MCCB)
- ▶ HRC Fuses, Fuse Bases
- ▶ MCCBs for DC & PV Systems
- ▶ Contactors, Relays, and Soft Starters
- ▶ Pilot Control Devices



HAVELLS INDUSTRIAL SOLUTIONS

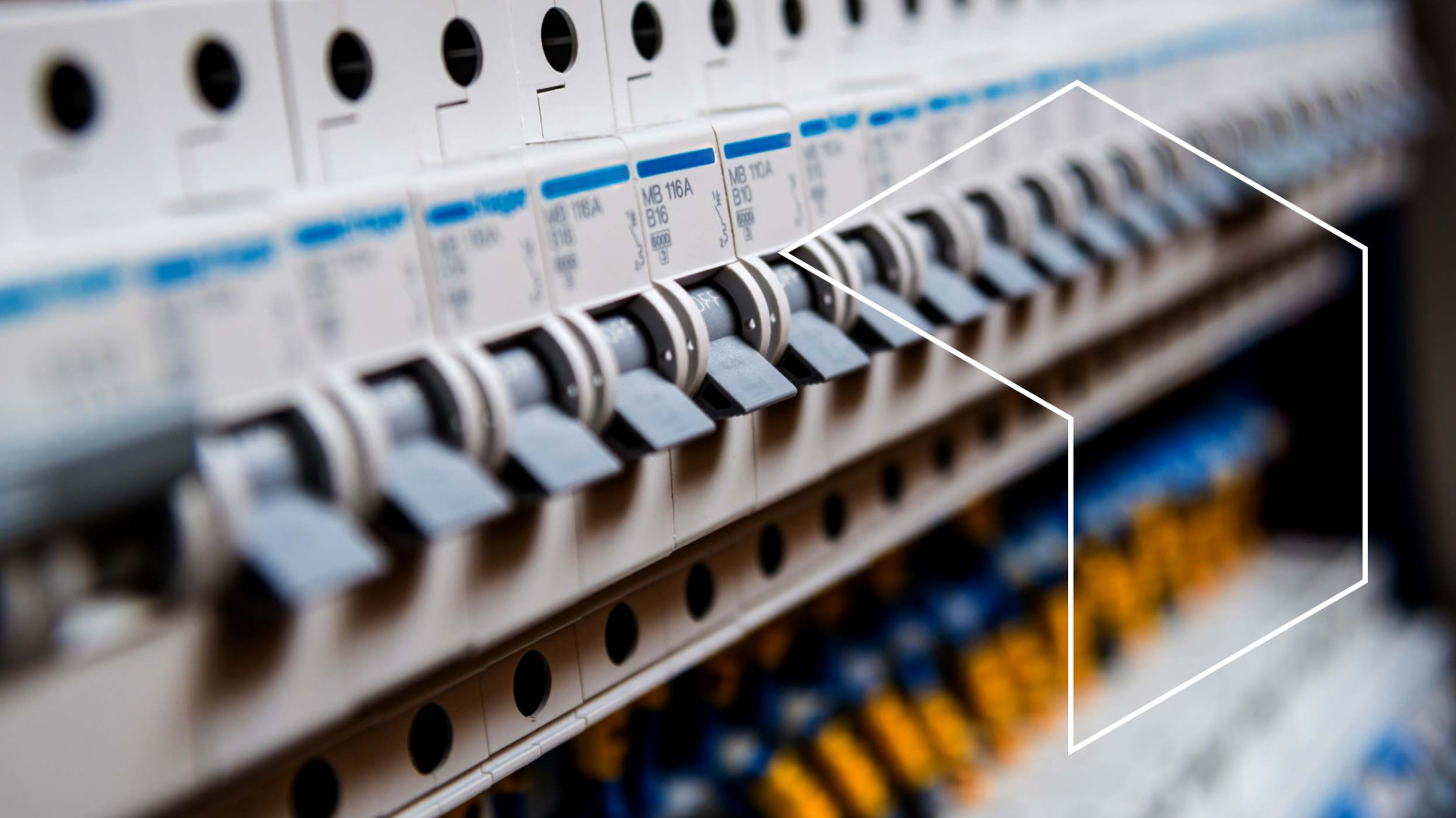
- ▶ LV Wires, HT Cables & Flexible Conductors
- ▶ LED Lighting for Industrial Applications
- ▶ AC/DC Motors & Comprehensive Switchgear Range



POLYCAB CABLING SOLUTIONS

- ▶ HT/LT Industrial Power Cables
- ▶ Instrumentation & Control Cables
- ▶ Flexible & Flame-Retardant Building Wires





CONNECTWELL COMPONENTS

- ▶ DIN Rail Terminal Blocks
- ▶ SMPS Units & Interface Modules
- ▶ Surge Protection Devices
- ▶ Industrial Cable Glands

connectwell

BHARAT BIJLEE MOTORS

- ▶ LV/MV Motors (General & Hazardous Area)
- ▶ Energy-Efficient and Custom Application Motors (Up to 1000 kW)

 **Bharat Bijlee**

PYROTECH ENCLOSURE SYSTEMS

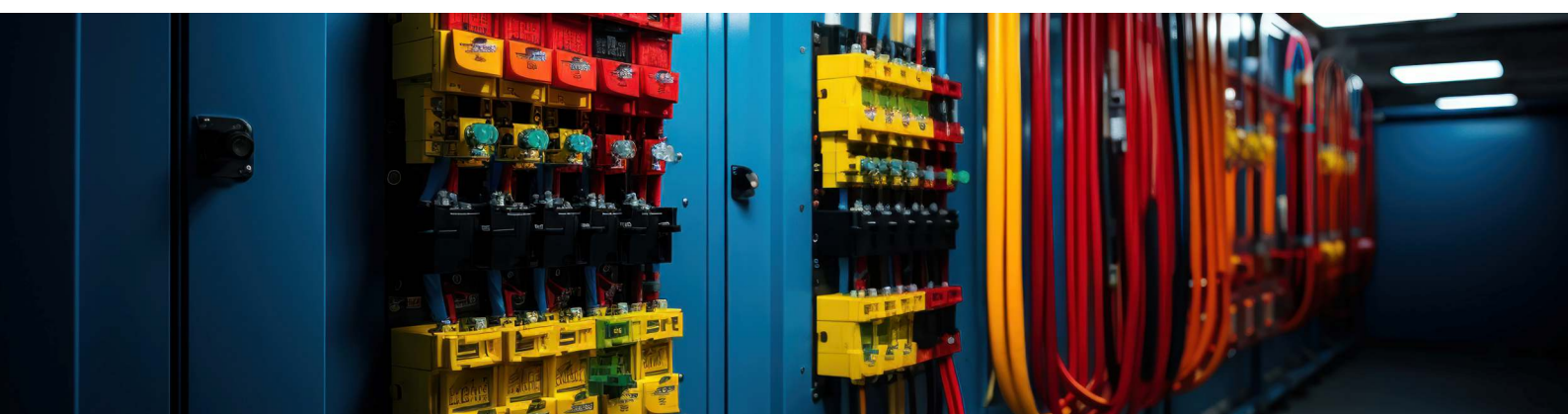
- ▶ Powder-Coated/SS Enclosures (IP Rated)
- ▶ IT Racks, Cable Management Systems
- ▶ Custom Fabricated PCC/MCC Panels & Workstations

 **Pyrotech**

OUR CLIENTS



and more...





Veltra
Eletech

Electrical Automation & Solution

Formerly Known as Vinworth Eletech PVT. LTD.

Veltra Eletech Pvt. Ltd.

www.veltra.com

Plot No.: 9, Changodar Industrial Estate,
Opp. Kamakshi Flexiprints, Changodar,
Ahmedabad - 382213 Gujarat

+91 82009 20878 / +91 93133 87309
sales@veltra.com